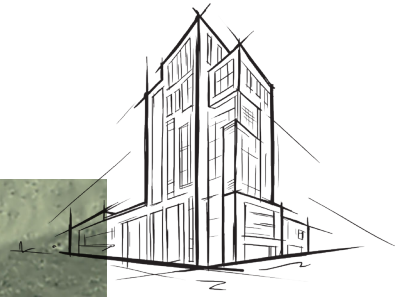


# AFB®

## Acoustical Fire Batt Insulation



ROCKWOOL AFB® is a lightweight, acoustical fire batt stone wool insulation specifically designed for steel stud interior wall and floor applications. Its superior sound absorbency and fire protection contribute to the overall comfort and safety of occupants.

It provides increased density that reduces sound transmission. Greater noise control is further achieved when AFB® is part of the wall assembly along with gypsum boards and resilient channels.

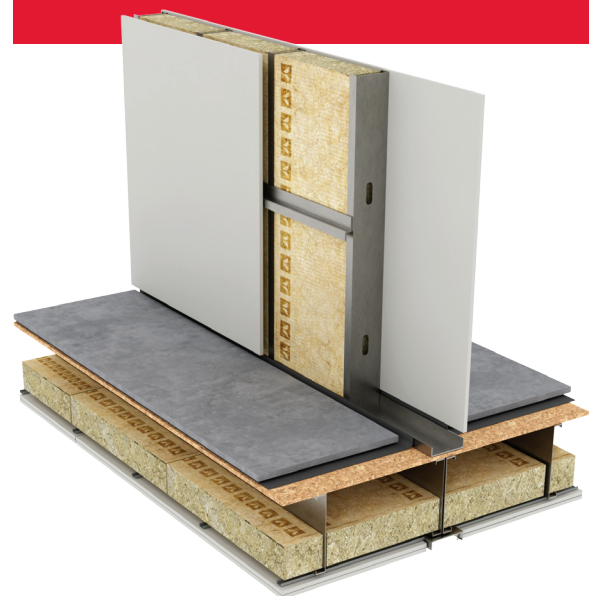
AFB® is non-combustible and will not develop toxic smoke or promote flame spread, even when directly exposed to fire. This helps to provide valuable extra time for people to reach safety and for fire services personnel to control the spread. It is a key component of fire-rated partitions.

AFB® comes in a number of thicknesses to meet the requirements of both retrofit and new construction applications.

Learn more at [rockwool.com/afb](https://rockwool.com/afb)

### Quiet Spaces

The higher density of ROCKWOOL AFB® can reduce sound transmission, helping to create a quiet and comfortable space.



**ROCKWOOL AFB® is a stone wool batt insulation for interior partition walls and floor/ceiling installations in commercial constructions where superior fire resistance and acoustical performance are required.**

	Performance	Test Standard	
Compliance	Mineral Fiber Thermal Insulation for Buildings, Type 1 Compliant	CAN/ULC S702	
	Mineral Fiber Blanket Thermal Insulation, Type 1 Compliant	ASTM C665	
	Mineral Fiber Blanket Thermal Insulation, Type 7 Compliant	ASTM C553	
	MEA Approval, New York City Approval	338-97-M	
Reaction to Fire	Flame Spread Index = 0; Smoke Developed Index = 0	ASTM E84 (UL 723) <sup>1</sup>	
	Flame Spread Rating = 0; Smoke Developed Classification = 0	CAN/ULC S102	
	Combustibility of Materials at 750 °C - Noncombustible	ASTM E136	
	Determination of Non-combustibility of Building Materials - Non-combustible	CAN/ULC S114	
	Smoulder Resistance - 0.04 wt%	CAN/ULC S129	
Nominal Density	> 2.5 lbs/ft³ (>40 kg/m³) <sup>†</sup>	ASTM C167	
Corrosion Resistance	Corrosiveness to Steel - Passed	ASTM C665	
Air Erosion	Maximum Air Velocity - 1000 fpm (5.08 m/s)	UL 181	
Thickness Dimensions	1" through 4" (25.4 mm - 101.6 mm) in 1/2" increments as well as 5" (127 mm) and 6" (152.4 mm) 16" x 48" (413 mm x 1219 mm), 24" x 48" (610 mm x 1219 mm)		
Acoustical Performance	Thickness (in.)	125 Hz    250 Hz    500 Hz    1000 Hz    2000 Hz    4000 Hz    NRC    SAA	
	1	0.05    0.22    0.63    0.84    0.90    0.94    0.65    0.65	ASTM C423
	2	0.22    0.69    1.09    1.05    0.99    0.99    0.95    0.96	
	3	0.42    0.90    1.22    1.12    1.08    1.07    1.10    1.08	
	4	0.73    1.24    1.13    1.04    1.02    1.03    1.10    1.11	
	6	1.11    1.28    1.15    1.06    1.03    1.01    1.15    1.14	
Fire Rated Designs	Please contact ROCKWOOL for STC ratings on tested wall assemblies		ASTM E90
	ULC Classification Code: BZJZC UL Classification Code: BZJZ		



**Declare.**



For more information regarding the certifications and listings of our stone wool insulation products, please visit:

[rockwool.com/certifications-and-listings](http://rockwool.com/certifications-and-listings)

#### Canadian Specifications and Sizing

Issued 07-2025  
Supersedes 05-2025

NOTE: \*Master Format 1995 Edition \*\*Master Format 2004 Edition. As ROCKWOOL has no control over installation design and workmanship, accessory materials or application conditions, ROCKWOOL does not warranty the performance or results of any installation containing ROCKWOOL's products. ROCKWOOL's overall liability and the remedies available are limited by the general terms and conditions of sale. This warranty is in lieu of all other warranties and conditions expressed or implied, including the warranties of merchantability and fitness for a particular purpose. Note 1: Meets Class A requirements for flame spread and smoke-developed indices as per IBC.

<sup>†</sup>Density will change with thickness. Density is not a performance criteria but is commonly referred to when specifying insulation. Actual density is the true density of the insulation and Nominal density is the effective density of the insulation relative to a historic benchmark where the insulation contained 40% non-fibrous content also known as Shot (ASTM C612-99). Please contact ROCKWOOL for more information.