

Curtainrock®

Curtain Wall Insulation



ROCKWOOL Curtainrock® is a lightweight, semi-rigid stone wool insulation board designed specifically for use in curtain wall systems. The product is particularly well suited for backpan applications and as part of assemblies that address exposed floor slab areas.

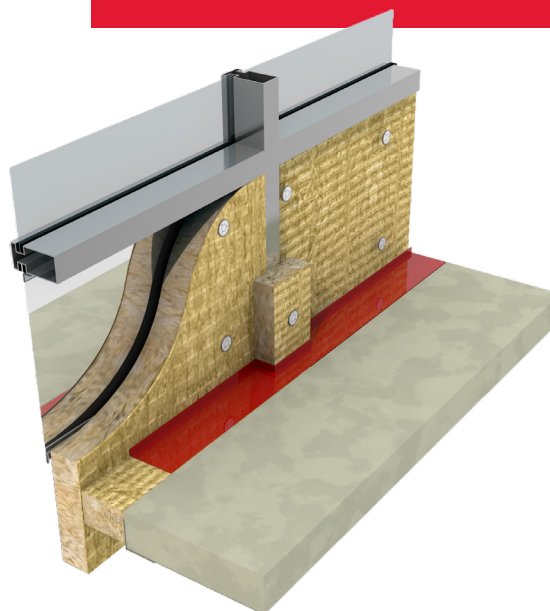
Curtainrock® is noncombustible and fire resistant, and will not develop toxic smoke or promote flame spread, even when exposed directly to a fire.

ROCKWOOL insulation has excellent acoustic properties and because the products are dimensionally stable, they maintain thermal performance over their lifetime, even in rising and falling temperatures. This contributes to the optimal performance of a building envelope.

Learn more at rockwool.com/curtainrock

A better fit

Curtainrock® is easy to fabricate, cut and install, ensuring an optimal fit for unitized and field installed backpan assemblies



ROCKWOOL Curtainrock® is a semi-rigid, stone wool insulation board designed for spandrel panel systems in curtain wall applications.

	Performance	Test Standard
Compliance	Mineral Fiber Block and Board Thermal Insulation - Type IVA Compliant	ASTM C612
Reaction to Fire	Flame Spread Index = 0; Smoke Developed Index = 0 Flame Spread Rating = 0; Smoke Developed Classification = 0 Combustibility of Materials at 750 °C - Noncombustible Determination of Non-combustibility of Building Materials - Non-combustible	ASTM E84 (UL 723) ¹ CAN/ULC S102 ASTM E136 CAN/ULC S114
Density	Actual Density - 3.5 lbs/ft ³ (56 kg/m ³)	ASTM C303
Dimensional Stability	Linear Shrinkage - < 2 % @ 1200 °F	ASTM C356
Corrosion Resistance	Stress Corrosion Cracking Tendency of Austenitic Stainless Steel - Passed Corrosiveness to Steel - Passed	ASTM C795 ASTM C665
Thermal Resistance	R-Value / inch @ 75 °F 4.2 hr.ft ² .F/Btu RSI value / 25.4 mm @ 24 °C 0.74 m ² K/W	ASTM C518 (C177)
Reaction to Moisture	Water Vapor Sorption - 0.01 vol% Determination of Fungi Resistance - Passed	ASTM C1104 ASTM C1338
Thickness Dimensions	Product is available in 1" through 6" offerings (25.4 mm - 152.4 mm) 24" x 48" (610 mm x 1219 mm)	



Issued 05-2025
Supersedes 11-2024

NOTE: *Master Format 1995 Edition **Master Format 2004 Edition. As ROCKWOOL has no control over installation design and workmanship, accessory materials or application conditions, ROCKWOOL does not warranty the performance or results of any installation containing ROCKWOOL's products. ROCKWOOL's overall liability and the remedies available are limited by the general terms and conditions of sale. This warranty is in lieu of all other warranties and conditions expressed or implied, including the warranties of merchantability and fitness for a particular purpose. Sustainability certifications may vary by product and region. Note 1: Meets Class A requirements for flame spread and smoke-developed indices as per IBC.