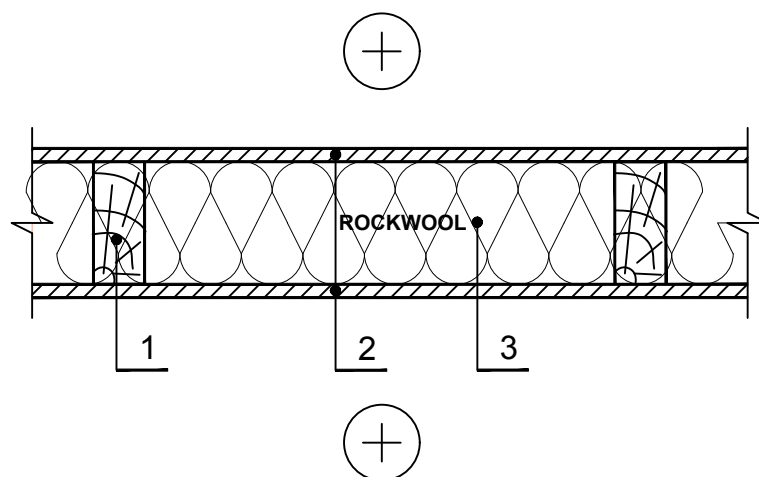


## P.4.2.1. Puitkarkass-vahesein

---

Horisontaalne sektsioon



---

1 Talad - puit 700 kg/m<sup>3</sup>

---

2 Viimistlusplaat

---

3 Soojustus - 0,035 W/mK, SUPERROCK /  
0,034 W/mK, SUPERROCK PREMIUM /  
0,033 W/mK, ROCKTON PREMIUM

---