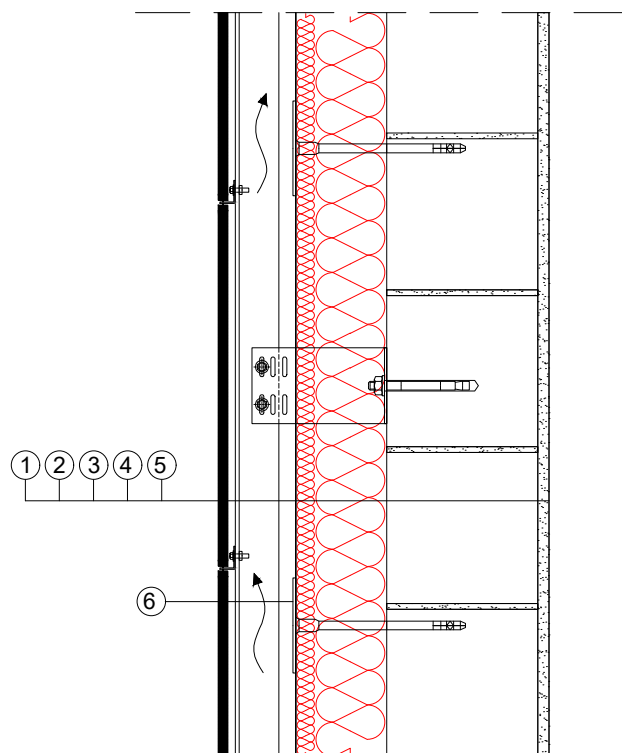


## 2.2. VENTILIRANA FASADA

### 2.2.3. Presjek ventilirane fasade s dvoslojnim pločama kamene vune



- 1 završna obloga na podkonstrukciji - 8 mm
- 2 ventilirani sloj zraka - 50 mm
- 3 ROCKWOOL Ventirock Duo\***
- 4 blok opeke
- 5 unutarinja žbuka
- 6 mehanička pričvrsnica

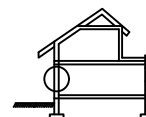
\* Proizvodi za istu namjenu: Fixrock 33 VF, Fixrock 35 VF, Ventirock Duo,

Detalj:

2.2.3.

Mjerilo:

1 : 10



**ROCKWOOL®**

www.rockwool.hr  
info@rockwool.hr