



RockSafe™ Plus

General Product Information

ROCKWOOL stone wool products are made of basalt, a volcanic stone.

ROCKWOOL RockSafe Plus products are specially developed to provide fire protection to the systems they are applied to. They are manufactured from long fine fibres, spun from molten natural rock, bonded with thermosetting resin. The products are asbestos free. The unique formulated contents in product makes it slightly greyish in colour, ensure stability of the fibre structures and provides a rigid surface when exposed directly to heat during a fire. The products have remarkable resistance to shrinkage at temperature encountered in fire conditions.

Common applications

RockSafe Plus products are developed to be used as a fire protection to curtain wall applications. The key application is in sealing of any openings in non-visible areas such as those between the curtain wall and the perimeter edge of the floor slab. This can prevent fire spread and maintained the fire compartment on each floor of the building in an event of fire.

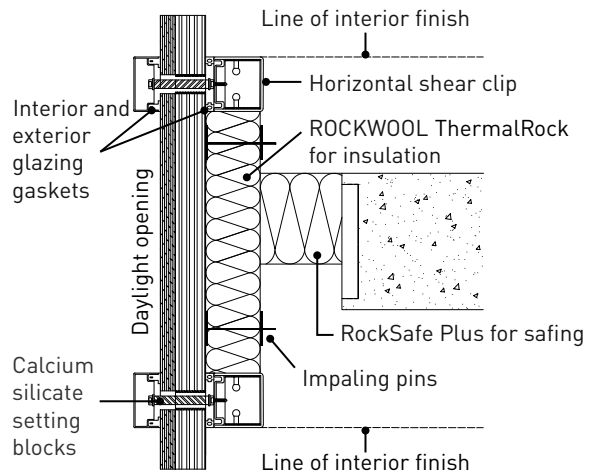
Curtain Wall Insulation

Common applications (Continued)

RockSafe Plus standard products are available in plain and can be faced with aluminium foil upon request.

Fire performance

RockSafe Plus has been subjected to fire resistance test in accordance to BS476 Part 20 in accredited laboratory and achieved two hours fire rating, meeting the integrity and insulation criteria. In this fire test, RockSafe Plus of 135mm thickness have been compressed to at least 15% of its total width and fitted into the various openings of the concrete floor slab. Please refer to your local authority for applicable approvals required on this product.



RockSafe Plus at perimeter edge of curtain wall

Technical Parameters

Properties	RockSafe Plus	Standards
Dimensions:		
Thickness	135mm	EN823
Length & Width	1200mm x 600mm	EN822
Density	80kg/m ³	EN826
Thermal Conductivity at 20°C	0.035W/mK	ASTM C518
Melting Point	= > 1000°C	DIN4102-17
Fire Performance	Non-combustible - 2 hours fire rating*	BS476 Part 4 ASTM E84 BS476 Part 20
Water Absorption (partial immersion)	Less than 0.5kg/m ²	EN1609:97
Corrosion Resistance	Faintly alkaline with pH 7.5-9 and incapable of corroding steel	ALPHA4500H+B
Water Vapour Absorption	Absorb < 0.04%Vol	ASTM C1104/1104M
Health & Safety:		
Odour Emission	No perceptible odour present	ASTM C665-06
Fungi Resistance	Does not encourage growth of fungi	ASTM 1338

* Please refer to your ROCKWOOL sales representative for the local authority's required approvals



www.rockwoolasia.com

FACTORY:

ROXUL-ROCKWOOL
Insulation India Pvt. Ltd.
Plot-Z/4, Dahej SEZ, Dahej
District Bharuch-392 130
Gujarat-India
T (+91) 2641 619400
F (+91) 2641 256292



Disclaimer: The information contained in this data sheet is believed to be correct at the date of publication. ROCKWOOL does not accept responsibility for the consequences of using RockSafe Plus in applications different from those described above.