

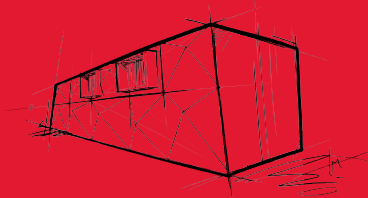
# ROCKWOOL Comfort Liner

## Fire, Thermal and Acoustic Insulation for Concrete Soffit

ROCKWOOL Comfort Liner is a high-performance insulation solution designed specifically for use in the soffits of commercial and industrial buildings. The product is made from non-combustible stone wool with high melting point of above 1000°C.

In addition to its non-combustible properties, ROCKWOOL Comfort Liner is known for its exceptional thermal performance. The insulation is designed to provide superior heat retention, helping to reduce energy consumption and lower heating costs for building owners.

This product is easy to install and easily cut to accommodate services. Available in various of thickness, it is an excellent choice for architects, builders, and contractors who are looking for a durable, high-quality insulation solution that will provide long-lasting thermal performance and peace of mind.



### Fire Performance

The non-combustible characteristics of ROCKWOOL Comfort Liner insulation means that it will not develop toxic smoke or promote flame spread even when directly exposed to fire.

# ROCKWOOL Comfort Liner

Technical Data Sheet  
Concrete Soffit Insulation  
1st November 2023

## Technical Parameters

Product	ROCKWOOL Comfort Liner SSL950	Test Standard
Reaction to Fire	Non-combustible Euroclass A1	AS 1530.1 EN 13501-1
Fire Hazard Properties	Ignitability: 0 Spread of flame: 0 Heat evolved: 0 Smoke developed: 0-1	AS 1530.3
Melting Point	1000°C	ASTM E794
Thermal Conductivity at mean 15°C	0.033 W/mK	ASTM C518
Water Absorption (partial immersion)	0.5 kg/m <sup>2</sup>	BS EN ISO 29767
Water Repellent	99 %	GB/T 10299
Water Vapor Absorption	Less than 0.04 Vol %	ASTM C1104/ 1104M

## Sound Absorption Coefficient (50mm Thickness)

Product	125Hz	250Hz	500Hz	1000Hz	2000Hz	4000Hz	NRC	$\alpha_w$
Comfort Liner SSL950	0.2	0.75	1.0	1.0	1.0	1.0	1.0	1.0

## Application

ROCKWOOL Comfort Liner is designed for use with concrete soffits where a thermal, fire or acoustic performance is required.

## Compliance with the New Zealand Building Code

ROCKWOOL stone wool products when used, installed and maintained in accordance with the requirements outlined in this datasheet, will meet or contribute to meeting the following provisions of the NZBC:

**1. Clause B2 DURABILITY: Performance B2.3.1 (a) not less than 50 years and B2.3.1 (b) 15 years.**

Where the building is maintained so that provisions of the NZBC E2 and E3 Clauses are met, and where the insulation is not crushed or exposed to conditions that will diminish its thermal performance, ROCKWOOL Stone Wool Insulation can expect to have a serviceable life of at least 50 years. Refer to Installation Guideline and Product Handling and Storage Guideline for more information.

**2. Clause E3 INTERNAL MOISTURE: Performance E3.3.1.**

ROCKWOOL Stone Wool Insulation contributes to meeting this requirement.

**3. Clause F2 HAZARDOUS BUILDING MATERIALS: Performance F2.3.1.**

ROCKWOOL Stone Wool Insulation is safe when handled.

**4. Clause H1 ENERGY EFFICIENCY: Performance H1.3.1 (a) and H1.3.2 E.**

ROCKWOOL Stone Wool Insulation will contribute to meeting the requirements of NZBC Clause H1, Performance H1.3.1 (a) and H1.3.2 E by complying with NZBC Verification Methods H1/VM1, H1/VM2, NZBC Acceptable Solutions H1/AS1, or H1/AS2.

For more information at [www.rockwool.com/anz](http://www.rockwool.com/anz)

# ROCKWOOL Comfort Liner

Technical Data Sheet  
Concrete Soffit Insulation  
1st November 2023

## Facings

ROCKWOOL Comfort Liner is available as plain products and additionally with options of foil facing or glass tissue on one side or two-sided.

## Packaging and Storage

ROCKWOOL Comfort Liner is shrink-wrapped in polyethylene sheets for ease of handling, transportation and storage. Products should be stored in doors or under waterproof covering.

## Health & Safety

ROCKWOOL stone wool products are manufactured from FBS-1 stone wool. FBS-1 stone wool is safe to use and the fibre component of these products is listed by Safe Work Australia as Man-made Vitreous Fibre (stone wool) of low bio persistence as specified under Note Q in the Australian Hazardous Substances Information System and in the Australian Approved Criteria.

## Product Specification

### ROCKWOOL Comfort Liner SSL950

R-Value m <sup>2</sup> K/W	Thickness (mm)	Width (mm)	Length (mm)	# Pieces per pack	Area per pack (m <sup>2</sup> )
0.75	25	600	1200	12	8.64
1.50	50	600	1200	6	4.32
1.95	64	600	1200	5	3.60
2.25	75	600	1200	4	2.88
2.75	90	600	1200	4	2.88
3.05	100	600	1200	3	2.16

## Applications



### Condensation Prevention

Recommended for healthcare centre, commercial buildings car parks, data center/server rooms, cold storage, etc.



### Thermal Comfort & Energy Savings

Recommended for soffit below the floor that exposed to sunlight e.g. sky garden at commercial building or residential condominium or regulated temperature warehouses, etc.



### Acoustic Comfort & Health Safety

Recommended for generator/machine/room of commercial buildings, indoor space with vehicle movement e.g. warehouses or transportation depot, etc.

For more information at [www.rockwool.com/anz](http://www.rockwool.com/anz)

# ROCKWOOL Comfort Liner

Technical Data Sheet  
Concrete Soffit Insulation  
1st November 2023

## Installation

When fixing a tile or modular system, it is advisable to start with a focus reference slab in the centre of the soffit with subsequent slabs being fixed working towards each edge. The use of string lines or laser alignment equipment will assist in ensuring alignment and squareness of the installation.

It is recommended that the insulation slabs are tightly butted to minimise heat loss through insulation gaps, ensuring a professional finish is achieved.

Insulation slab can be mechanically fixed onto soffit using insulation fastener (gas actuator tool) or insulation anchor (pre-drilling).

Fixings should be installed 150mm from the edge and corners. Recommended number and pattern of fixings for each slab size are shown in figures 1 and 2 below depending on the fastener requirement. Care should be taken not to over-tighten fixings to prevent damage to slab surface. For further information on fixing type and suitability, please refer to the fixing manufacturer.

Any hanging rod or services penetrating through the insulation slab should be with minimum damage to the insulation slab.

## Fixing size guide



Figure 1

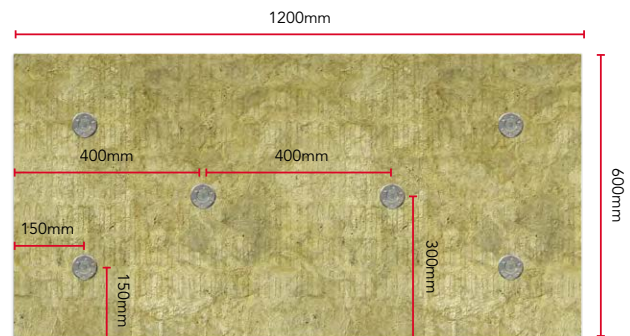


Figure 2

## Light fittings and services

Soffit insulation products should not be used for supporting light fittings or services. Such installations should be supported from the concrete soffit.



Disclaimer: The information contained in this data sheet is only applicable for New Zealand and is believed to be correct at the date of publication and is subject to change after the date of printing. This data sheet was designed for general information purpose only. It's contents should not be construed as representing all performance for these insulation materials. You should not act or rely on any of the information contained herein without seeking professional advice. We make no representations as to accuracy, completeness, correctness, suitability or validity of any information in this document and will not be liable for any errors, omissions, or delays in this information or any losses, injuries or damages arising from its use. All information is provided on an as-is basis.

For more information at [www.rockwool.com/anz](http://www.rockwool.com/anz)

**ROCKWOOL Malaysia Sdn. Bhd.**  
Lot 4, Solok Waja 1, Bukit Raja Industrial Park,  
41050 Klang, Selangor, Malaysia.  
T (+60) 3 3341 3444 · F (+60) 3 3342 7290  
info@rockwool.com