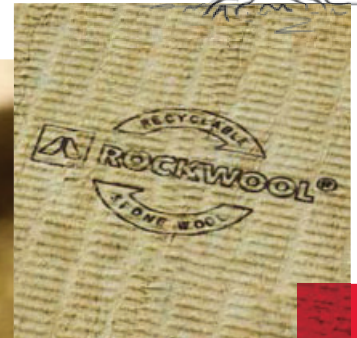




ROCKCYCLE® the heart of ROCKWOOL® sustainability

Let's turn ROCKWOOL® waste into a new resource, creating sustainable construction together.



Turning challenges into opportunities

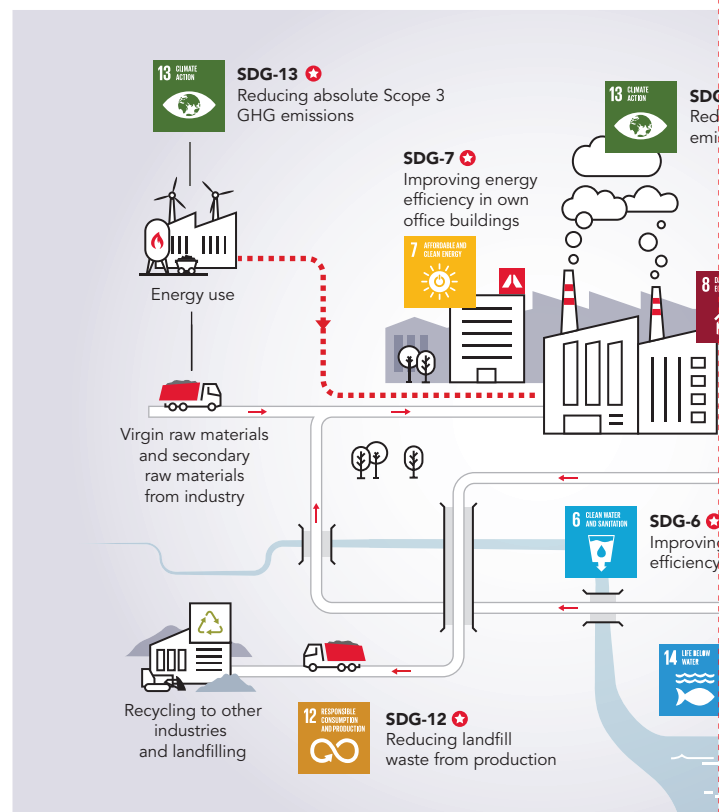
At ROCKWOOL® we transform volcanic rock into stone wool to produce products that tackle many of society's biggest challenges related to climate change. We are creating new opportunities to enrich modern life and build safer, healthier and more climate-resilient communities. Stone wool is a versatile natural material that has many uses in construction, transportation, horticulture, and water management, and many other industries.

Sustainability is at the heart of our business strategy. We are one of the pioneers in the active implementation of the UN Sustainable Development Goals. Since 2016, we have used this framework to set our own group targets, besides measuring our progress and achievements. We initially focused on 10 of the 17 goals, but in 2022, we further added the 11th goal - SDG 14 'Living Underwater' - recognising its relevance towards our business.



Our priorities:

Fighting



Our value created:

Saving energy
cleaner environ

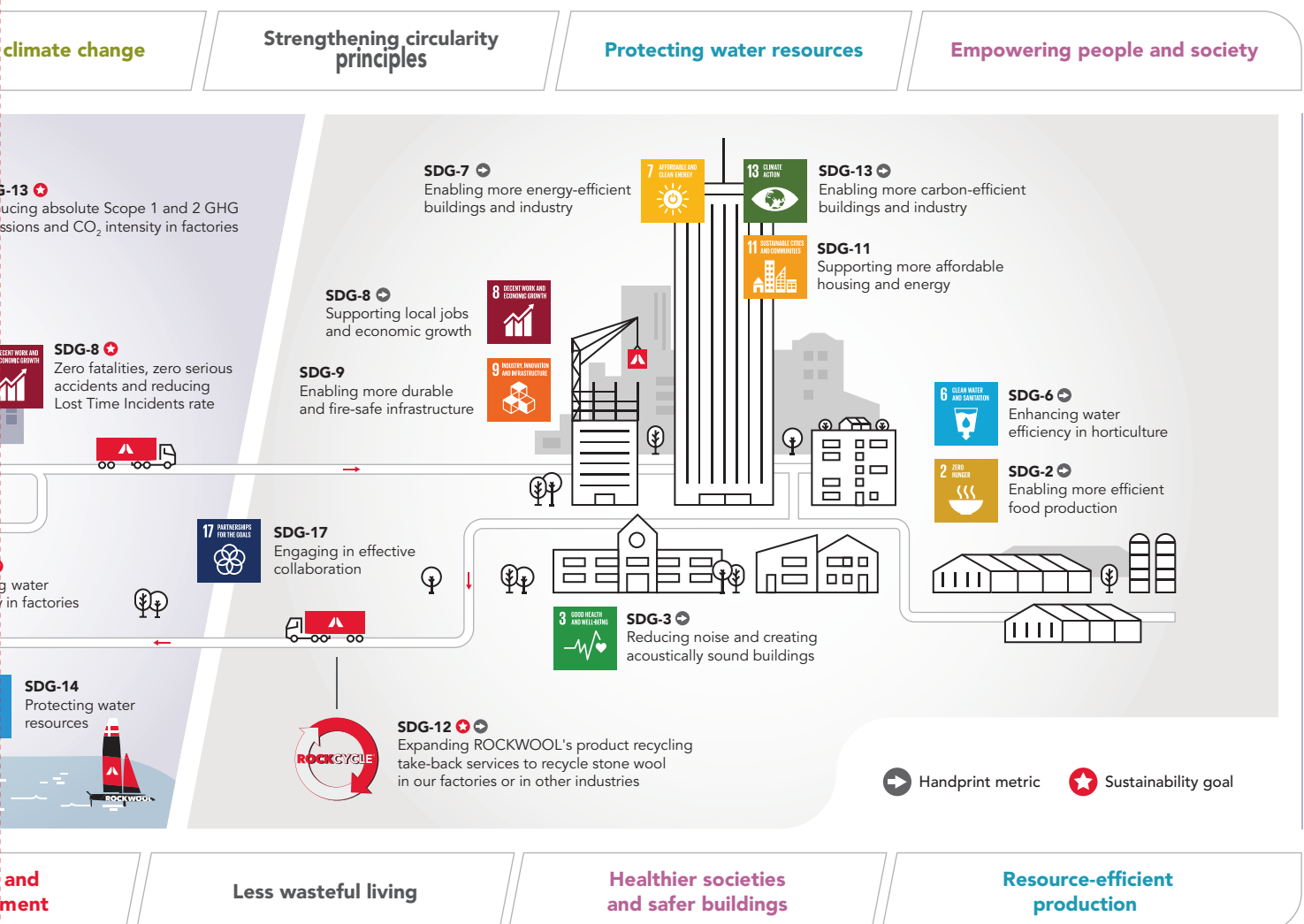
We create innovative products that address the pressing needs of modern society. This direction supports us into transforming sustainability challenges into business strategies. At ROCKWOOL® we have developed 8 group-level sustainability goals, two of which are science-based, reviewed, and endorsed by the Science Based-Targets initiative. We strive to create a sustainable world that goes beyond reducing our operational carbon footprint.

Commitment in sustainable development is visible in all aspects of our activities.

Starting from the production process, to managing waste, into the final products. Our activities are aimed not only at minimising negative environmental impact, but also to actively contribute towards improving the quality of life and protecting our planet.

The culmination of our sustainability effort is the Rockcycle® programme. This is an innovative stone wool recycling scheme that allows the material to be reused in new building projects. This programme not only reduces the amount of waste going into landfills, but also contributes in increasing resources efficiently and reducing CO₂ emissions. By supporting a closed loop economy, Rockcycle® is the key element towards our sustainability strategy.

At ROCKWOOL® we believe that every little effort makes a difference. Through our actions, products, and commitment to sustainability, we contribute to building a better world for future generations. We invite you to work with us and shape the future together, where sustainability and recycling become the foundation of modern buildings.

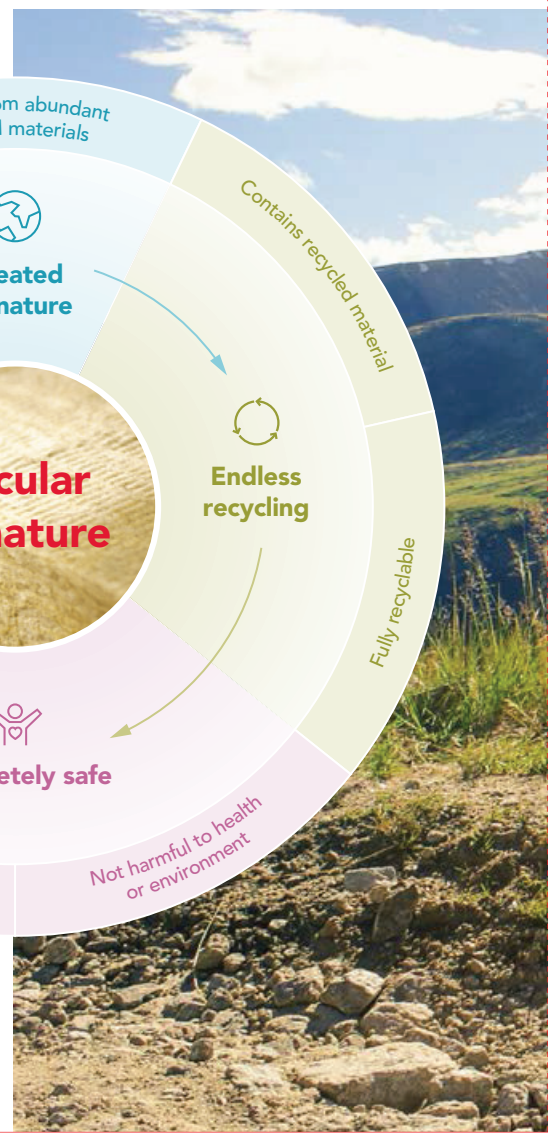
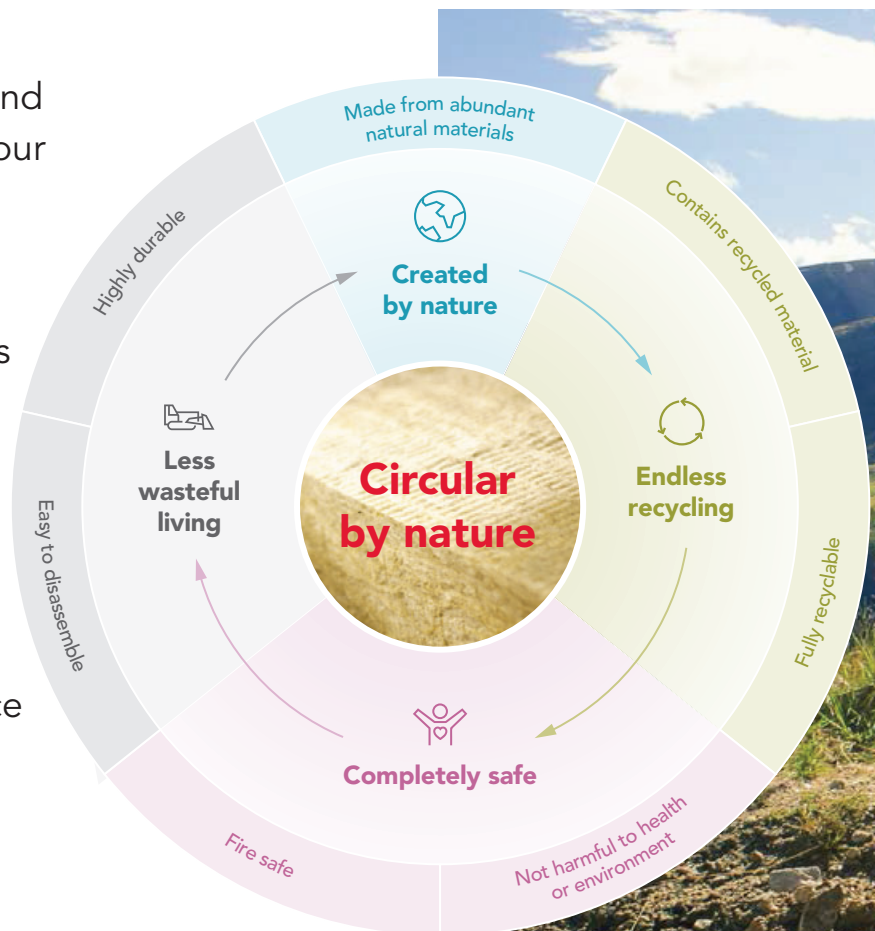




From waste to resource.

Rockcycle® - ROCKWOOL's innovative approach to recycling

At ROCKWOOL® we understand the importance of protecting our planet. Which is why we developed Rockcycle® - an innovative approach to stone wool recycling that contributes towards our achievement in meeting our sustainable targets. ROCKWOOL® is a building material with outstanding insulation, acoustic, and fireproof properties. It is the ideal choice for ecological construction.



What is Rockcycle®?

Rockcycle® is a recycling service that promotes the return of new off-cuts and unused ROCKWOOL® stone wool insulation from construction sites in Malaysia. Our dedicated recycling facility in Melaka, is able to recycle ROCKWOOL® stone wool insulation made in Malaysia, by turning it into new products and diverting waste from landfills, thus supporting a circular economy in the construction industry.



Why use the service?

Currently, construction waste recycling is becoming increasingly important driven by regulatory requirements, economic realities, and environmental needs.

Architects, construction companies, and their clients are seeking ways to reduce waste at building sites and demanding a more sustainable approach towards the use of construction materials. Rockcycle® offers a practical solution for contractors seeking to operate more sustainably by reducing waste in landfills.

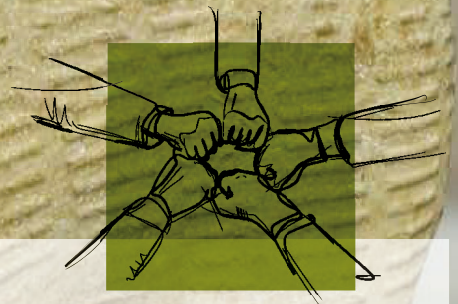
Recycling through Rockcycle® can also contribute towards credits in building sustainability assessments such as GBI and LEED. Using the Rockcycle® programme also involves a cost per project, which may vary due to the logistics and distances involved. An individual price will be provided upon each application.

- ROCKWOOL® Stone Wool unsoiled scraps are inert waste and not dangerous
- The sorting, collection, and transportation of these scraps do not require any special conditions
- This is why we make managing scraps easier by taking them back



Cooperation and principles of the Rockcycle[®] programme

At ROCKWOOL[®] we are committed to helping our customers achieve their sustainability goals. The Rockcycle[®] programme offers a unique opportunity to turn stone wool waste into full value products.



Advantages of the Rockcycle[®] Programme for ROCKWOOL[®] Partners

The Rockcycle[®] programme offers our ROCKWOOL[®] partners a wide range of benefits that contribute to their sustainability goals. Participation in the programme enables them to build a reputation as responsible and environmentally friendly business partners. With Rockcycle[®], partners can significantly reduce their environmental impact through effective waste management.

A key advantage of the programme is the simple and repeatable process, which enables a reduction in costs associated with disposal of stone wool post-consumer waste. Rockcycle[®] ensures efficient use of waste, transforming it into a valuable resource, resulting in financial and environmental savings.



Who can benefit from Rockcycle®

The Rockcycle® programme is available to our customers who wish to actively contribute towards sustainable development by recycling stone wool.



In each one of our factories, scraps and waste from ROCKWOOL® Stone Wool is already recycled. Today, ROCKWOOL® wants to get operational for your benefit. Our teams are ready to take up the challenge to collect, control, and recycle waste at your doorstep. Sorting is the first step of Recycling while being mindful in the following steps:

- Immediate sorting to avoid dispersal of waste on the shop floor.
- Source sorting of materials to limit and control operations.
- Efficient sorting in accordance with storage to prevent deterioration of sorted materials.
- Wet waste and any other waste like plastic, metal parts, etc to be sorted out as well.

Stone wool recycling process

- 1 You decide**
By choosing Rockcycle®, you agree to sort ROCKWOOL® stone wool waste related to the delivery and offcuts of stone wool.
- 2 You Inform ROCKWOOL®**
You inform ROCKWOOL® on the volume of ROCKWOOL® stone wool waste generated at your place so that we can understand your waste condition and prepare accordingly.
- 3 You isolate and you sort**
We accept waste that has been sorted according to the guidelines provided.



- 4 Notify us**
You notify our ROCKWOOL® representative on removal request of your ROCKWOOL® stone wool waste.
- 5 Collect & transport**
Waste will be collected based on the agreed transportation.
- 6 We recycle, we value**
Delivery of the wool for recycling as agreed in the contract.

How to participate

The Rockcycle® recycling service is available to all customers of ROCKWOOL® Malaysia. Prices are provided as per use of Rockcycle® services. An individual price will be offered upon each application.

We have tailored our services to help make recycling stone wool even easier.

Please contact us to discuss recycling opportunities for your next project.

Email: rockcycle.my@rockwool.com



Legal disclaimer

The ROCKWOOL® Trademark

ROCKWOOL® - our trademark

The ROCKWOOL® trademark was initially registered in Denmark as a logo mark back in 1936. In 1937, it was accompanied with a word mark registration; a registration which is now extended to more than 60 countries around the world. The ROCKWOOL® trademark is one of the largest assets in the ROCKWOOL® Group, and thus well protected and defended by us throughout the world.

Disclaimer

ROCKWOOL Malaysia Sdn. Bhd. reserves the right to alter or amend the specification of products without notice as our policy is one of constant improvement. The information contained in this brochure is believed to be correct at the date of publication. Whilst ROCKWOOL Malaysia Sdn. Bhd. will endeavour to keep its publications up to date, readers would appreciate that between publications there may be pertinent changes in the law, or other developments affecting the accuracy of the information contained in this brochure. The applications referred to within the brochure do not necessarily represent an exhaustive list of applications. ROCKWOOL Malaysia Sdn. Bhd. does not accept responsibility for the consequences of using ROCKWOOL® in applications different from those described within this brochure. Expert advice should be sought where such different applications are contemplated, or where the extent of any listed application is in doubt.

ROCKWOOL Malaysia Sdn. Bhd.

Office:

Lot 4, Solok Waja 1, Bukit Raja Industrial Estate,
41050 Klang, Selangor, Malaysia.
T (+60) 3 3346 8200

Factory & Warehouse:

175 A & B, Kawasan Perindustrian Ayer Keroh,
Jalan Lingkungan Usaha, 75450 Melaka, Malaysia.
T (+60) 6 233 2010

RockCycle.my@rockwool.com

For more information at www.rockwoolasia.com