

Masonry outer leaf  
(Typical 103mm brickwork)  
(By Others)

ROCKWOOL Full Fill Cavity Batts  
(Thickness to suit required u-value)

Stainless steel wall ties to suit  
structural requirements (By Others)

Internal lining and finishes  
(By Others)

Internal blockwork leaf to  
suit structural and thermal  
requirements (By Others)

FIREPRO Acoustic  
Intumescent Sealant

FIREPRO Acoustic  
Intumescent Sealant

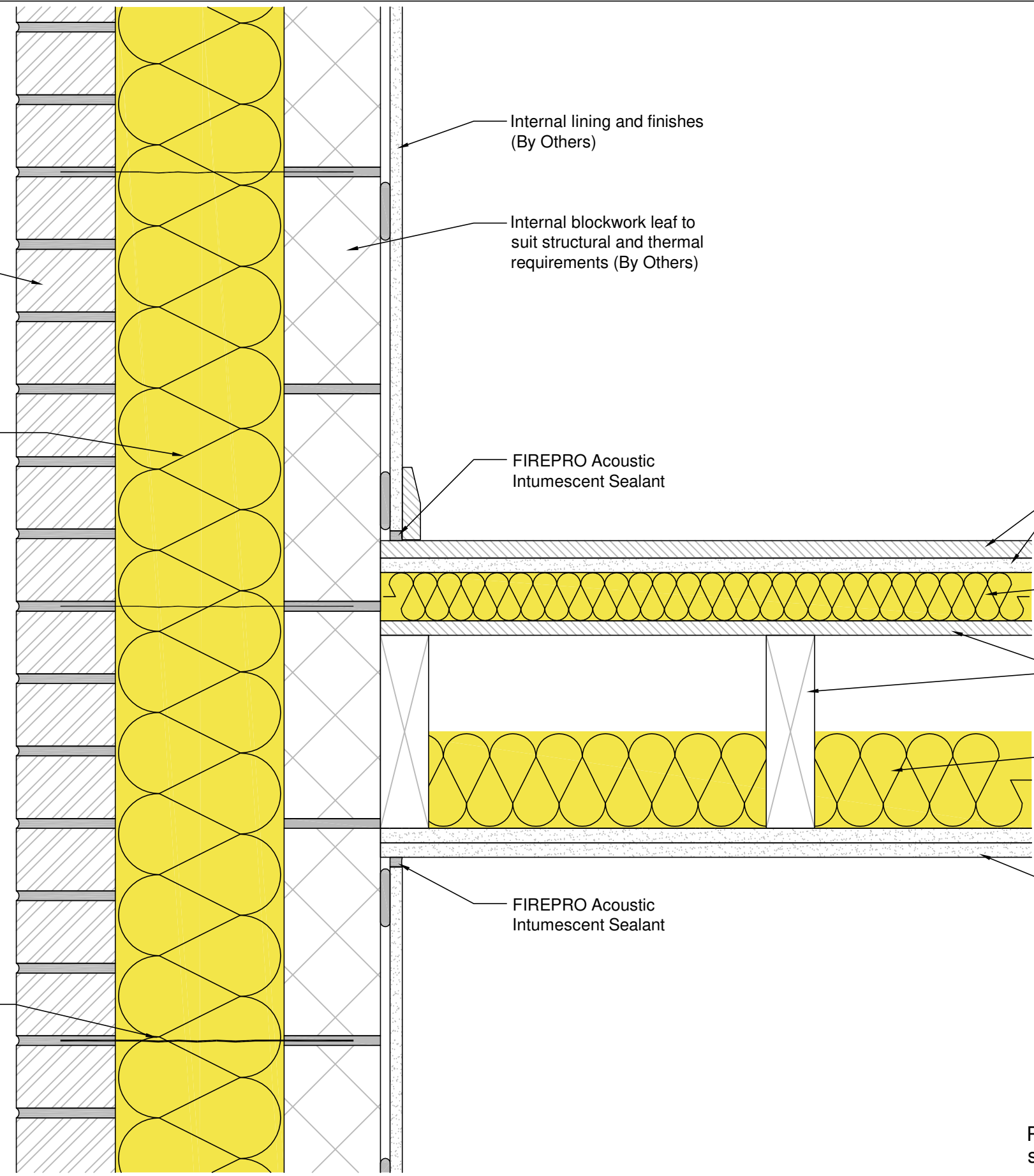
Minimum 2 layers of board material  
total mass of 25kg/m<sup>3</sup> (e.g. 18mm T&G  
flooring grade chipboard over 19mm  
plasterboard plank)

25mm (min) ROCKFLOOR resilient layer

Existing timber joists and floor deck

100mm ROCKWOOL FLEXI

Existing ceiling upgraded to 20kg/m<sup>3</sup>



Please refer to relevant ROCKWOOL product data sheet for further detail / specification / performance

This CAD Drawing is for illustration purposes only and shall not form part of any contract with ROCKWOOL or hold any contractual force.

Usage of the information remains under the sole responsibility of the purchaser and/or user

ROCKWOOL makes no warranty, representation or guarantee regarding the information contained in the CAD Drawing, the suitability of the products for any particular purposes or the continuing production of any product. To the maximum extent permitted by applicable law, ROCKWOOL disclaims (i) any and all liability arising out of the CAD drawing, the application, use of any product, misuse or inability to use the product (ii) any and all liability, including without limitation special, consequential or incidental damages, and (iii) any and all liability of any nature resulting from the use or reliance upon the information contained in this CAD Drawing. No express or implied warranties are given other than those implied by law.

Information contained in this CAD Drawing is up-to-date as at the date of issue. As ROCKWOOL Limited cannot control or anticipate the conditions under which the information contained in this CAD Drawing may be used, each user should review the information in specific context of the planned use and must obtain approval by Building Control and/or the overseeing body for the project, who are ultimately responsible for approving the correct application/specification.

No license, express or implied, by estoppel or otherwise, to any intellectual property rights is granted by this document or by any conduct of ROCKWOOL



Pencoed, Bridgend,  
South Wales CF35 6NY  
t: 01656 868490  
technical.solutions@rockwool.co.uk

Title: Separating Floor - Acoustic Timber (Without Resilient Bars)	
Scale: N.T.S.	Date: May 2021
Drawing Reference: RWSD-GEN-3011	Revision 1