

Case study

ROCKWOOL® and Rockpanel® unite to support DIY SOS: The Big Build

Fegg Hayes, Stoke-on-Trent





The project

ROCKWOOL® and Rockpanel® are pleased to have played a part in the transformation of a community space in Fegg Hayes, Stoke on Trent, as part of the BBC One series, DIY SOS: The Big Build.

In an episode that aired in June 2022, donations of ROCKWOOL insulation and Rockpanel exterior cladding were used by the DIY SOS team as they created an outdoor space for Fegg Hayes charity, Sylvester Community Trust.



The challenge

The Fegg Hayes residents, like many throughout the UK, experience issues that communities face on a daily basis as the country grapples through the cost-of-living crisis.

In 2017, a local residents association created a grass roots project, which has since been granted charitable status as the Sylvester's Community Trust.

The DIY SOS: The Big Build project involved converting an unused piece of land into a multi-functional area for Fegg Hayes local residents. It was designed to productively use green space to encourage community engagement, with activities to boost residents' health (particularly mental health), education, food growth and play/recreational spaces, all planned to be used for years to come.



The solution

The two products donated to DIY SOS: The Big Build were ROCKWOOL Flexi® and Rockpanel Chameleon.

Both were used on the conversion of six, 8ft x 20ft shipping containers into usable internal spaces for the local residents. These shipping containers were transformed for a variety of uses, including an office and meeting space, kitchen area, storage room, disabled-friendly toilet and a men's groups space with workshop.

ROCKWOOL Flexi® is a non-combustible dual-purpose acoustic and thermal stone wool insulation slab which was used in multiple applications throughout the project. The ROCKWOOL Flexi® slab is manufactured with a patented flexible edge, ensuring a true fit is maintained between the insulation and the supporting framework. With time of the essence during the project, the use of ROCKWOOL Flexi® was a great choice as it can be friction-fitted, making for straightforward installation.

Rockpanel Chameleon Green-Brown was used as eye-catching exterior cladding. Rockpanel Chameleon boards derive their unique properties by combining compressed stone wool mineral fibre - a sustainable raw material - with a special crystal effect paint finish. The vibrant colours change depending on the angle from which it is viewed and the effect of the sunlight.



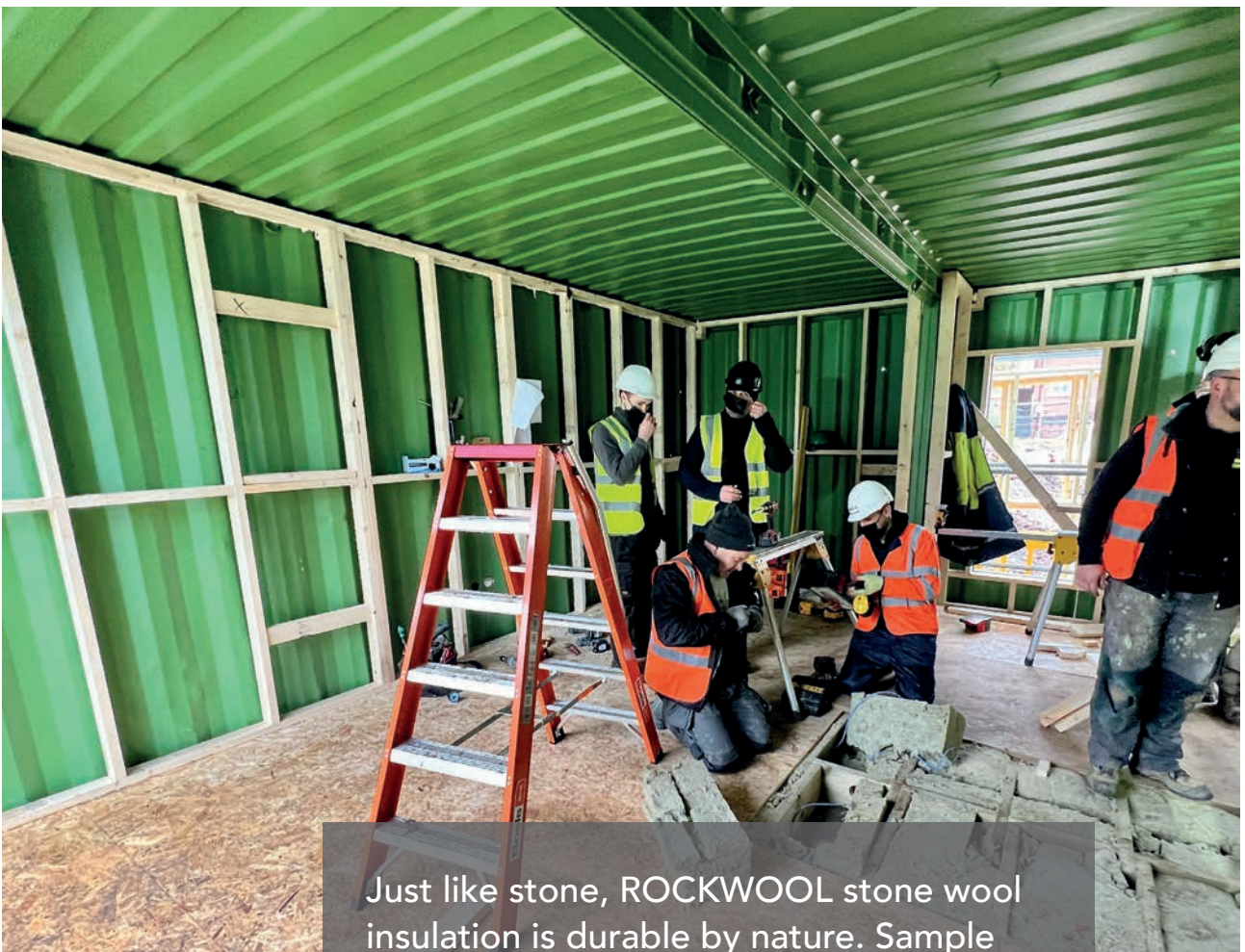
ROCKWOOL Flexi® was a great choice as it can be friction-fitted, making for straightforward installation.

Rockpanel Chameleon Green-Brown was used as eye-catching exterior cladding.



The result

James Francis, Product Manager at ROCKWOOL, said: "We were pleased to collaborate with Rockpanel to support this inspirational project supplying products to help the Fegg Hayes' community. ROCKWOOL stone wool is a durable choice; Research and testing have shown that its properties and benefits don't reduce or change over time, and the product will effectively perform for the lifetime of the building.*"



Just like stone, ROCKWOOL stone wool insulation is durable by nature. Sample testing from existing buildings shows that ROCKWOOL stone wool retains its performance for at least 65 years* without being affected by compression or temperature and humidity changes.

**Testing undertaken by Danish Technical Institute (DTI) in 2023; FIW, Durability Project Mineral Wool (2016).*