



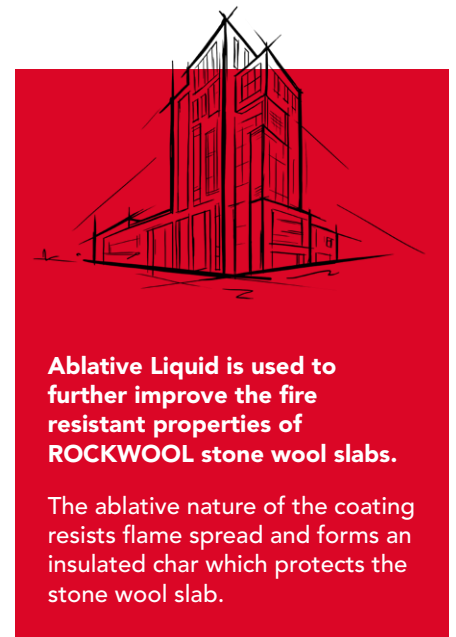
# FirePro® Ablative Liquid

Improves the fire resistant properties for  
ROCKWOOL stone wool slabs

The FirePro Ablative Liquid is a water based, ready to use viscous paste which may be brush or spray-applied to stone wool slabs. The coating is available in white and may be over painted if desired.\* Ablative Liquid is supplied in 5L tubs.

- Suitable for spray or brush application
- Dries to give a sound, flexible white surface finish
- Provides a stable surface for adhesive and fixing sealants

\*Please contact ROCKWOOL Technical Solutions for guidance on suitable paints



# FirePro Ablative Liquid



## APPLICATIONS

The Ablative Liquid is available separately to enable site repairs to FirePro Ablative Coated Batt, that may have been damaged during installation.

Ablative Coated Batt is intended to act as an air seal barrier to reinstate the fire resistance and acoustic performances of concrete floors, masonry walls and dry wall systems when voids have been created for the passage of services. This includes pipes made of plain or stainless steel, cast iron, copper, polypropylene (PP), high density polythene (HDPE), PVC and ABS along with all sheathed cables up to 80mm and supported cable bundles up to 100mm

# FirePro Ablative Liquid

## PERFORMANCE

### Fire performance

FirePro Ablative Liquid is designed to re-seal the surface of FirePro Ablative Coated Batt where damage to the ablative coating may have occurred during installation.

FirePro Ablative Coated Batt has been tested to the dedicated fire resistance standard for penetration seals EN 1366-3. The independently prepared assessment, detailing the full scope of fire performance, is available from the ROCKWOOL Technical Solutions Team. Ablative Coated Batt fire resistance tests were conducted using FirePro Acoustic Intumescent Sealant and/or FirePro Glue.

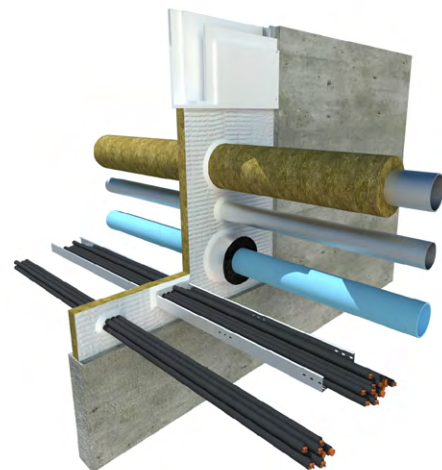
FirePro Ablative Liquid and stone wool slabs may only be used to fire protect service penetrations if supported by independent fire test evidence due to the variants in the density and thicknesses of stone wool slabs available.

## PRODUCT INFORMATION

Property	Description
Cure system	Water loss
Colour	White
Specific gravity	1.3 – 1.4
pH	8.5 – 9.2
Flashpoint	None
Solids content (%w/w)	>58%
Application temp range	+10°C to +30°C
Vice temp range	-15°C to +75°C
Shelf life	Up to 12 months when stored in unopened containers under cool dry conditions. Avoid frost and extremes of temperature
Durability	Up to 15 years when used as recommended

## INSTALLATION

ROCKWOOL Ablative Coating can be spray or brush applied.



## SPECIFICATION CLAUSES

FirePro Ablative Liquid is associated with the following NBS clauses:

P12 Fire stopping systems
325 Boards – Mineral Bound Lightweight
360 Mineral Wool Rigid Batts
365 Mineral Wool Rigid Batts – Ablative Coated

# FirePro Ablative Liquid

## BUILDING SAFETY AND PRODUCT USE

### LEGAL NOTICES

#### General safety requirements – Building Safety Act 2022

ROCKWOOL Limited is committed to supporting specifiers, resellers and users of ROCKWOOL products for the full life cycle of the product to comply with the obligations and responsibilities set out in the Building Safety Act 2022. With regard to the general safety requirements of the Act, ROCKWOOL Limited cannot control or foresee every situation where its products might be used. We therefore strongly advise that specifiers, resellers and users contact us where use of ROCKWOOL products is contemplated in applications different from those explicitly described in the latest, relevant ROCKWOOL product datasheets; especially in applications that can be reasonably foreseen as critical to safety.

ROCKWOOL Limited reserves the right to amend the specification of its products without notice. Changes to the ROCKWOOL manufacturing process, or to pertinent regulations, may be reflected in changes to tested and certified product performance. Whilst ROCKWOOL Limited endeavours to keep its publications up to date, readers will appreciate that between publications there may be pertinent changes in the law or other developments affecting the accuracy of the information contained in our publications.

ROCKWOOL Limited does not accept responsibility for the consequences of using (including testing or certifying) its products in applications different from those explicitly described in the relevant ROCKWOOL product datasheets. Expert advice should be sought, and ROCKWOOL Limited should be contacted, where such different use is contemplated, or where the extent of any use described by ROCKWOOL Limited is in doubt.

#### The ROCKWOOL Trademark

ROCKWOOL® - our trademark

The ROCKWOOL trademark was initially registered in Denmark as a logo mark back in 1936. In 1937, it was accompanied with a word mark registration; a registration which is now extended to more than 60 countries around the world.

The ROCKWOOL trademark is one of the most important assets of the ROCKWOOL Group, and is therefore well-protected and defended by ROCKWOOL throughout the world.

If you require permission to use the ROCKWOOL logo for your business, advertising or promotion, you must apply for a Trade Mark Usage Agreement.

To apply, write to:  
[marketcom@rockwool.com](mailto:marketcom@rockwool.com)

#### Trademarks

Registered trademarks of the ROCKWOOL Group include but are not limited to:

ROCKWOOL®, RockClose®, RainScreen Duo Slab®, HardRock®, RockFloor® Flexi®, RockFall®, FirePro®, DuctRock®, BeamClad®, NyRock®

© ROCKWOOL 2023.  
All rights reserved.

#### Photography and illustrations

The product illustrations are the property of ROCKWOOL Limited and have been created for indicative purposes only.

Unless indicated below, the photography and illustrations used in this guide are the property of ROCKWOOL Limited. We reserve all rights to the usage of these images.

If you require permission to use ROCKWOOL images, you must apply for a Usage Agreement.

To apply, write to:  
[marketcom@rockwool.com](mailto:marketcom@rockwool.com)

### HEALTH & SAFETY

A Material Safety Data Sheet is available and can be downloaded from [www.rockwool.com/uk](http://www.rockwool.com/uk) to assist in the preparation of risk assessments, as required by the Control of Substances Hazardous to Health Regulations (COSHH)

# FirePro Ablative Liquid

## ROCKWOOL stone wool - safe to install and live alongside

There are no hazardous classifications associated with stone wool insulation manufactured by ROCKWOOL-UK according to EU REACH and UK REACH regulations on health and the environment.

ROCKWOOL safe use instruction sheets and material safety data sheets (where applicable) can be downloaded [here](#).



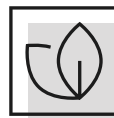
### Sustainability

ROCKWOOL products are used to enrich modern living, creating safer, healthier and more climate-resilient communities.

We transform abundant, natural volcanic rock into stone wool insulation products that are used to reduce energy demand, lower fuel bills and help address society's climate change challenges.

ROCKWOOL stone wool insulation is recyclable and can be transformed into new ROCKWOOL products. Please contact us for details of how we can work together to recycle waste ROCKWOOL stone wool material that may be generated during on-site installation.

Our annual sustainability reports, which set out progress against our sustainability goals, and further details of the positive impacts of using our products can be found on our website.



### Environment

ROCKWOOL takes a fact-based, auditable approach to documenting our progress in maximising our products' positive impact and minimising the effect our operations have on the environment, backed by third-party references and methodologies. Further details can be found online in our annual sustainability report.

Our high-tech production process uses filters, pre-heaters, after-burners and other cleaning and collection systems that help to reduce the effects of our manufacturing operations on the environment.

ROCKWOOL stone wool insulation does not contain (and has never contained) gases that have ozone depletion potential (ODP) or global warming potential (GWP).

