

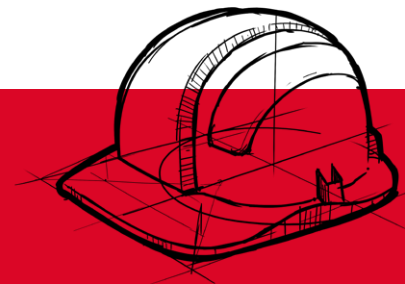


# RockLap H&V Pipe Supports

Loadbearing stone wool insulation for use with pipework

RockLap H&V Pipe Supports are short cylindrical sections of insulation designed to reduce heat loss where pipework meets supporting pipe clamps. Manufactured with a density of 200 kg/m<sup>3</sup>, the product has a mechanical strength suitable for loadbearing applications.

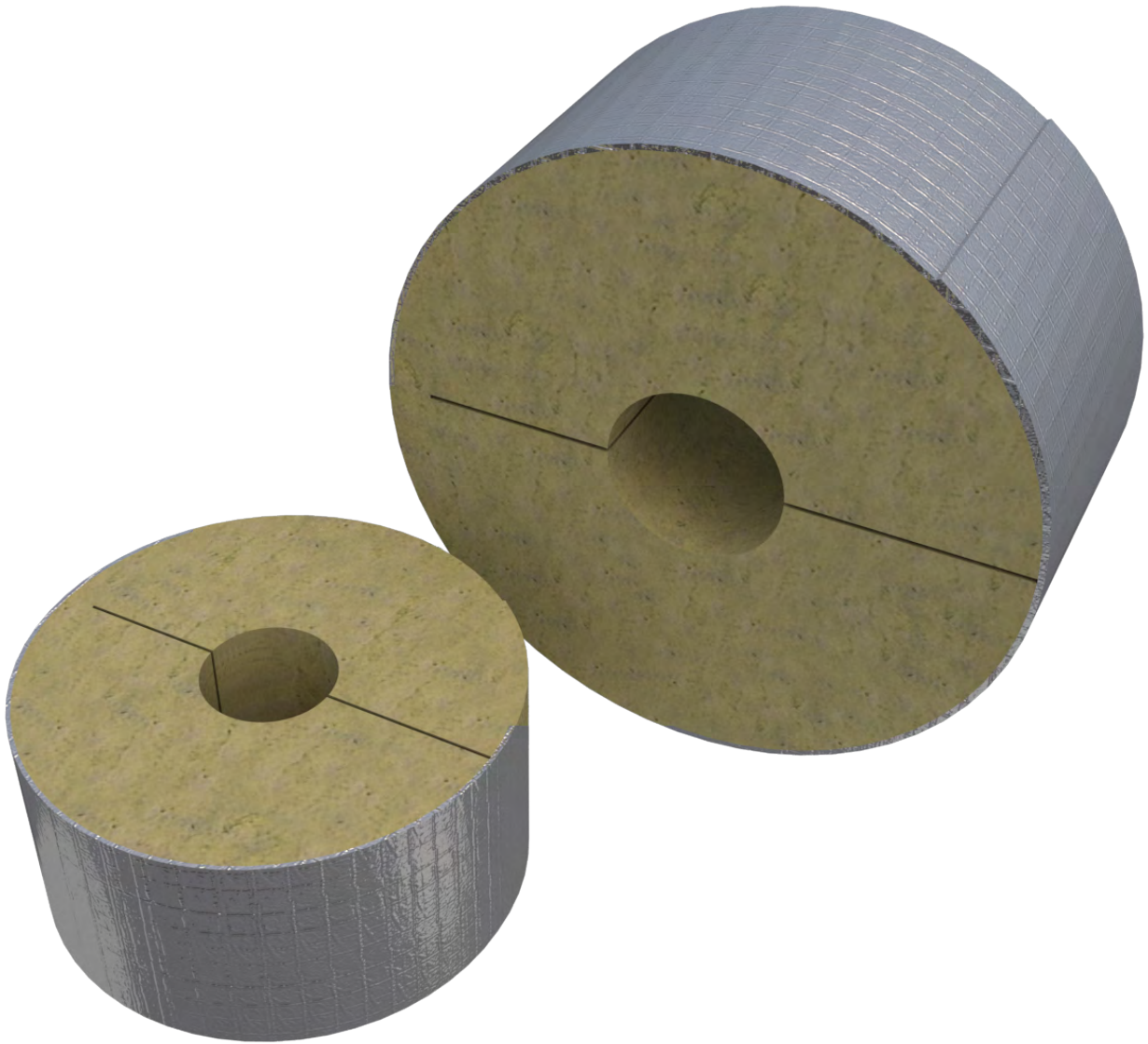
- Non-combustible stone wool
- CE-marked to EN 14303
- Euroclass A2<sub>1</sub>-s1, d0



**RockLap H&V Pipe Supports have been designed to minimise the effects of thermal bridging from pipe suspension systems, maintaining the energy efficiency of pipework operating at temperatures of 0°C to 200°C.**

RockLap H&V Pipe Supports are non-combustible, rated Euroclass A2<sub>1</sub>-s1, d0, and when combined with RockLap H&V Pipe Sections, form an efficient insulation solution with thermal, fire and acoustic benefits.

# RockLap H&V Pipe Supports



## APPLICATIONS

RockLap H&V Pipe Supports are suitable for use with both cold/hot steel and copper pipes operating at a temperature range of 0°C to 200°C. RockLap H&V Pipe Supports are designed for use in pipe supports, hanger brackets and clamps.

# RockLap H&V Pipe Supports

## PRODUCT INFORMATION

Property	Description					
Outside diameter range	*17-210mm					
Wall thickness	20-100mm					
Length	**80-100mm					
Reaction to fire	A2 <sub>s</sub> -s1, d0					
Service temperature	Stone wool: 0-200°C Aluminium foil: ≤ 80°C					
Specific heat	0.84 KJ/KgK					
Water vapour resistance (μ)	> 10,000					
Thermal conductivity	T (°C)	10	50	100	150	200
	λ (W/mK)	0.056	0.063	0.072	0.081	0.091

\*Other sizes may be available please contact ROCKWOOL Technical Support for further information

\*\*Product length varies to accommodate larger hanger support clips:

Pipe support length	OD range (mm)	Thickness range (mm)
80mm	17-135	20-80
	140-160	25-60
100mm	89-135	100
	140-160	70-100
	169-210	25-100

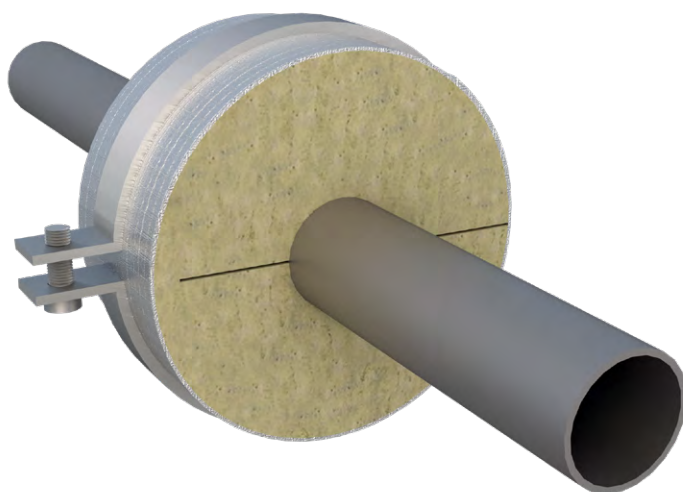
## INSTALLATION

RockLap H&V Pipe Supports are simple to install and are available to suit a wide range of pipe diameters.

RockLap H&V Pipe Supports are supplied pre-cut. Simply place the support around the pipe and move into the location of the pipe support clip, ensuring the support is positioned centrally. (See Figure 1)

Once positioned, seal the RockLap H&V Pipe Support with the self-adhesive overlap and ensure that the joints between the pipe support and pipe insulation are securely taped with a suitable self-adhesive aluminium foil tape to maintain a continuous vapour barrier.

Figure 1



### Maintenance

Once installed, RockLap H&V Pipe Sections shouldn't require any further maintenance.

# RockLap H&V Pipe Supports

## BUILDING SAFETY AND PRODUCT USE

### LEGAL NOTICES

#### General safety requirements – Building Safety Act 2022

ROCKWOOL Limited is committed to supporting specifiers, resellers and users of ROCKWOOL products for the full life cycle of the product to comply with the obligations and responsibilities set out in the Building Safety Act 2022. With regard to the general safety requirements of the Act, ROCKWOOL Limited cannot control or foresee every situation where its products might be used. We therefore strongly advise that specifiers, resellers and users contact us where use of ROCKWOOL products is contemplated in applications different from those explicitly described in the latest, relevant ROCKWOOL product datasheets; especially in applications that can be reasonably foreseen as critical to safety.

ROCKWOOL Limited reserves the right to amend the specification of its products without notice. Changes to the ROCKWOOL manufacturing process, or to pertinent regulations, may be reflected in changes to tested and certified product performance. Whilst ROCKWOOL Limited endeavours to keep its publications up to date, readers will appreciate that between publications there may be pertinent changes in the law or other developments affecting the accuracy of the information contained in our publications.

ROCKWOOL Limited does not accept responsibility for the consequences of using (including testing or certifying) its products in applications different from those explicitly described in the relevant ROCKWOOL product datasheets. Expert advice should be sought, and ROCKWOOL Limited should be contacted, where such different use is contemplated, or where the extent of any use described by ROCKWOOL Limited is in doubt.

#### The ROCKWOOL Trademark

ROCKWOOL® - our trademark

The ROCKWOOL trademark was initially registered in Denmark as a logo mark back in 1936. In 1937, it was accompanied with a word mark registration; a registration which is now extended to more than 60 countries around the world.

The ROCKWOOL trademark is one of the most important assets of the ROCKWOOL Group, and is therefore well-protected and defended by ROCKWOOL throughout the world.

If you require permission to use the ROCKWOOL logo for your business, advertising or promotion, you must apply for a Trade Mark Usage Agreement.

To apply, write to:  
[marketcom@rockwool.com](mailto:marketcom@rockwool.com)

#### Trademarks

Registered trademarks of the ROCKWOOL Group include but are not limited to:

ROCKWOOL®, RockClose®, RainScreen Duo Slab®, HardRock®, RockFloor®, Flexi®, RockFall®, FirePro®, DuctRock®, BeamClad®, NyRock®

© ROCKWOOL 2023.  
All rights reserved.

#### Photography and illustrations

The product illustrations are the property of ROCKWOOL Limited and have been created for indicative purposes only.

Unless indicated below, the photography and illustrations used in this guide are the property of ROCKWOOL Limited. We reserve all rights to the usage of these images.

If you require permission to use ROCKWOOL images, you must apply for a Usage Agreement.

To apply, write to:  
[marketcom@rockwool.com](mailto:marketcom@rockwool.com)



# RockLap H&V Pipe Supports

## ROCKWOOL stone wool - safe to install and live alongside

There are no hazardous classifications associated with stone wool insulation manufactured by ROCKWOOL-UK according to EU REACH and UK REACH regulations on health and the environment.

ROCKWOOL safe use instruction sheets and material safety data sheets (where applicable) can be downloaded [here](#).



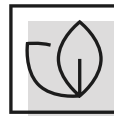
### Sustainability

ROCKWOOL products are used to enrich modern living, creating safer, healthier and more climate-resilient communities.

We transform abundant, natural volcanic rock into stone wool insulation products that are used to reduce energy demand, lower fuel bills and help address society's climate change challenges.

ROCKWOOL stone wool insulation is recyclable and can be transformed into new ROCKWOOL products. Please contact us for details of how we can work together to recycle waste ROCKWOOL stone wool material that may be generated during on-site installation.

Our annual sustainability reports, which set out progress against our sustainability goals, and further details of the positive impacts of using our products can be found on our website.



### Environment

ROCKWOOL takes a fact-based, auditable approach to documenting our progress in maximising our products' positive impact and minimising the effect our operations have on the environment, backed by third-party references and methodologies. Further details can be found online in our annual sustainability report.

Our high-tech production process uses filters, pre-heaters, after-burners and other cleaning and collection systems that help to reduce the effects of our manufacturing operations on the environment.

ROCKWOOL stone wool insulation does not contain (and has never contained) gases that have ozone depletion potential (ODP) or global warming potential (GWP).

