



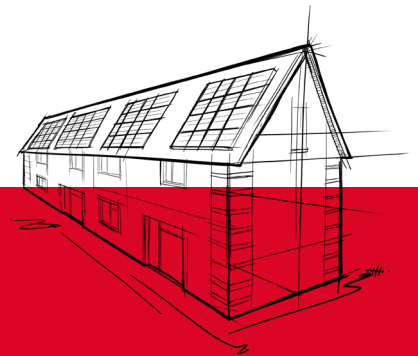
# RockClose®

Minimises thermal bridging at door and window reveals in cavity wall constructions

RockClose® is an insulated cavity closer. The product is designed to minimise thermal bridging around windows and doors in first-fix cavity wall installations with a returning inside leaf. Designed to be installed as work proceeds between the outer masonry leaf and internal closer block prior to the frames being fitted.

The product consists of a strip of semi-rigid non-combustible ROCKWOOL insulation, bonded to a black polyethylene DPC.

- Minimises thermal bridging around openings
- Integral damp proof course
- Fire resistance performance of up to 60 minutes integrity and insulation
- One width covers most applications
- Self-supporting, easy to handle and install



**RockClose® is an insulated damp proof course, developed to minimise thermal bridging at door and window reveals in masonry cavity walls.**

Just like stone, ROCKWOOL stone wool insulation is durable by nature. Lasting 65 years (and counting), its performance is unaffected by weather, humidity, temperature changes or compression –and needs no technical supervision or refurbishment.

*Source: Testing done at Danish Technical Institute (DTI) in 2023; FIW, Durability Project Mineral Wool (2016), p. 14.*



Figure 1 - RockClose Insulated DPC

## APPLICATIONS

RockClose has been specifically developed to minimise thermal bridging at door and window reveals whilst also providing a fire-resistant cavity closer.

The effect of thermal bridging has been a long-recognised problem, which has been given even greater significance under the relevant Thermal Building Regulations. In a typical building, as much as 20% heat loss can occur around door and window reveals if not correctly addressed. Building Regulations require that thermal bridges that occur at junctions between building elements are included in the calculation of transmission heat losses.

# RockClose

## PERFORMANCE

### Thermal performance

RockClose achieves a thermal conductivity lambda ( $\lambda$ ) value of 0.035 W/mK in accordance with BS EN 13162:2012 + A1:2015.

### Fire performance

RockClose has been tested as a linear joint seal in accordance with BS EN 1366-4.

### Acoustic performance

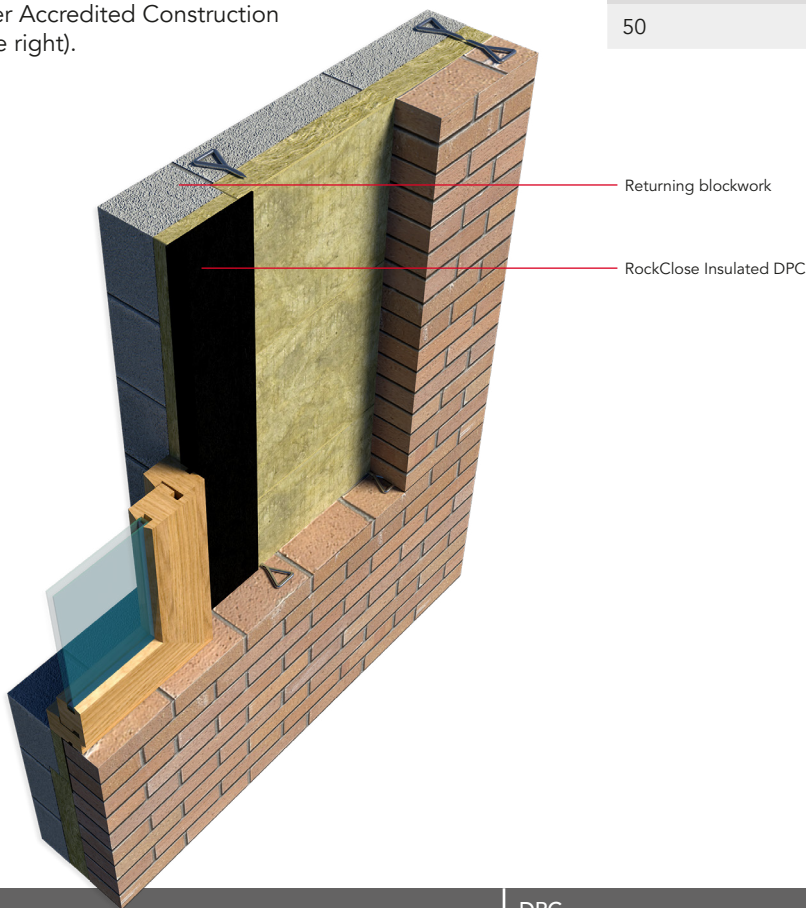
The non-directional fibre orientation and density of stone wool means that sound waves are trapped, and vibrations dampened which can significantly reduce outside sources of noise when used in an external wall.

ROCKWOOL insulation retains its shape and thickness for the lifetime of the building, which means it performs acoustically decade after decade.

## TYPICAL U-VALUES

For masonry cavity walls, ROCKWOOL RockClose will exceed the minimum thermal resistance path through the closer of not less than 0.45m<sup>2</sup> K/W as required under Accredited Construction Details (see table right).

Thickness (mm)	Thermal resistance (W/m <sup>2</sup> K)
20	0.570
30	0.857
50	1.430



Insulation			DPC		
Thickness (mm)	Width (mm)	Length (mm)	Length (mm)	Width (mm)	Bottom lap (mm)
20, 30 & 50	100	1200	1300	180 (40mm lap each side of the insulation)	100

## SPECIFICATION CLAUSES

RockClose is associated with the following NBS clause:

RockClose F30 :18, F30:180

## ADDITIONAL INFORMATION

### Durability

ROCKWOOL stone wool is durable by nature. Sample testing from existing buildings shows that ROCKWOOL stone wool retains its performance for at least 65 years\* without being affected by compression or temperature and humidity changes.

*\*FIW, Durability Project Mineral Wool (2016).*

### Water Resistance and Moisture

The product will resist the transfer of water across the cavity. The orientation of the water repellent fibres prevent water crossing the wall construction, providing the slabs are correctly installed and sound building techniques are applied to the cavity wall construction (see our installation manual for further guidance on this). Any water penetrating the outer leaf will drain down the surface of the slab.

### Condensation

ROCKWOOL stone wool insulation allows the construction to breathe, reducing the risk of condensation, which can lead to rot, mould and humidity damage.

## INSTALLATION

The product must be installed in accordance with the current ROCKWOOL guidelines. For further information please visit [www.rockwool.com/uk](http://www.rockwool.com/uk) or contact our Technical Solutions Team on 01656 868490.

### LEGAL NOTICES

#### General safety requirements – Building Safety Act 2022

ROCKWOOL Limited is committed to supporting specifiers, resellers and users of ROCKWOOL products for the full life cycle of the product to comply with the obligations and responsibilities set out in the Building Safety Act 2022. With regard to the general safety requirements of the Act, ROCKWOOL Limited cannot control or foresee every situation where its products might be used. We therefore strongly advise that specifiers, resellers and users contact us where use of ROCKWOOL products is contemplated in applications different from those explicitly described in the latest, relevant ROCKWOOL product datasheets; especially in applications that can be reasonably foreseen as critical to safety.

ROCKWOOL Limited reserves the right to amend the specification of its products without notice. Changes to the ROCKWOOL manufacturing process, or to pertinent regulations, may be reflected in changes to tested and certified product performance. Whilst ROCKWOOL Limited endeavours to keep its publications up to date, readers will appreciate that between publications there may be pertinent changes in the law or other developments affecting the accuracy of the information contained in our publications.

ROCKWOOL Limited does not accept responsibility for the consequences of using (including testing or certifying) its products in applications different from those explicitly described in the relevant ROCKWOOL product datasheets. Expert advice should be sought, and ROCKWOOL Limited should be contacted, where such different use is contemplated, or where the extent of any use described by ROCKWOOL Limited is in doubt.

#### The ROCKWOOL Trademark

ROCKWOOL® - our trademark

The ROCKWOOL trademark was initially registered in Denmark as a logo mark back in 1936. In 1937, it was accompanied with a word mark registration; a registration which is now extended to more than 60 countries around the world.

The ROCKWOOL trademark is one of the most important assets of the ROCKWOOL Group, and is therefore well-protected and defended by ROCKWOOL throughout the world.

If you require permission to use the ROCKWOOL logo for your business, advertising or promotion, you must apply for a Trade Mark Usage Agreement.

To apply, write to:  
[marketcom@rockwool.com](mailto:marketcom@rockwool.com)

#### Trademarks

Registered trademarks of the ROCKWOOL Group include but are not limited to:

ROCKWOOL®, RockClose®, RainScreen Duo Slab®, HardRock®, RockFloor®, Flexi®, RockFall®, FirePro®, DuctRock®, BeamClad®, NyRock®

© ROCKWOOL 2023.  
All rights reserved.

#### Photography and illustrations

The product illustrations are the property of ROCKWOOL Limited and have been created for indicative purposes only.

Unless indicated below, the photography and illustrations used in this guide are the property of ROCKWOOL Limited. We reserve all rights to the usage of these images.

If you require permission to use ROCKWOOL images, you must apply for a Usage Agreement.

To apply, write to:  
[marketcom@rockwool.com](mailto:marketcom@rockwool.com)

## ROCKWOOL stone wool - safe to install and live alongside

There are no hazardous classifications associated with stone wool insulation manufactured by ROCKWOOL-UK according to EU REACH and UK REACH regulations on health and the environment.

ROCKWOOL safe use instruction sheets and material safety data sheets (where applicable) can be downloaded [here](#).



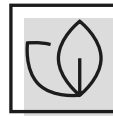
### Sustainability

ROCKWOOL products are used to enrich modern living, creating safer, healthier and more climate-resilient communities.

We transform abundant, natural volcanic rock into stone wool insulation products that are used to reduce energy demand, lower fuel bills and help address society's climate change challenges.

ROCKWOOL stone wool insulation is recyclable and can be transformed into new ROCKWOOL products. Please contact us for details of how we can work together to recycle waste ROCKWOOL stone wool material that may be generated during on-site installation.

Our annual sustainability reports, which set out progress against our sustainability goals, and further details of the positive impacts of using our products can be found on our website.



### Environment

ROCKWOOL takes a fact-based, auditable approach to documenting our progress in maximising our products' positive impact and minimising the effect our operations have on the environment, backed by third-party references and methodologies. Further details can be found online in our annual sustainability report.

Our high-tech production process uses filters, pre-heaters, after-burners and other cleaning and collection systems that help to reduce the effects of our manufacturing operations on the environment.

ROCKWOOL stone wool insulation does not contain (and has never contained) gases that have ozone depletion potential (ODP) or global warming potential (GWP).

