

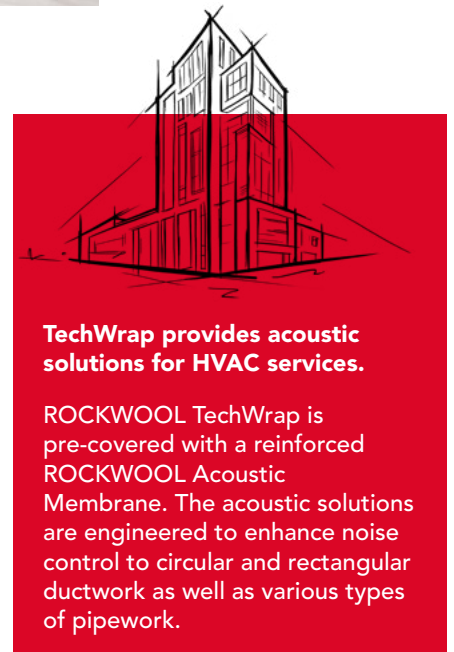


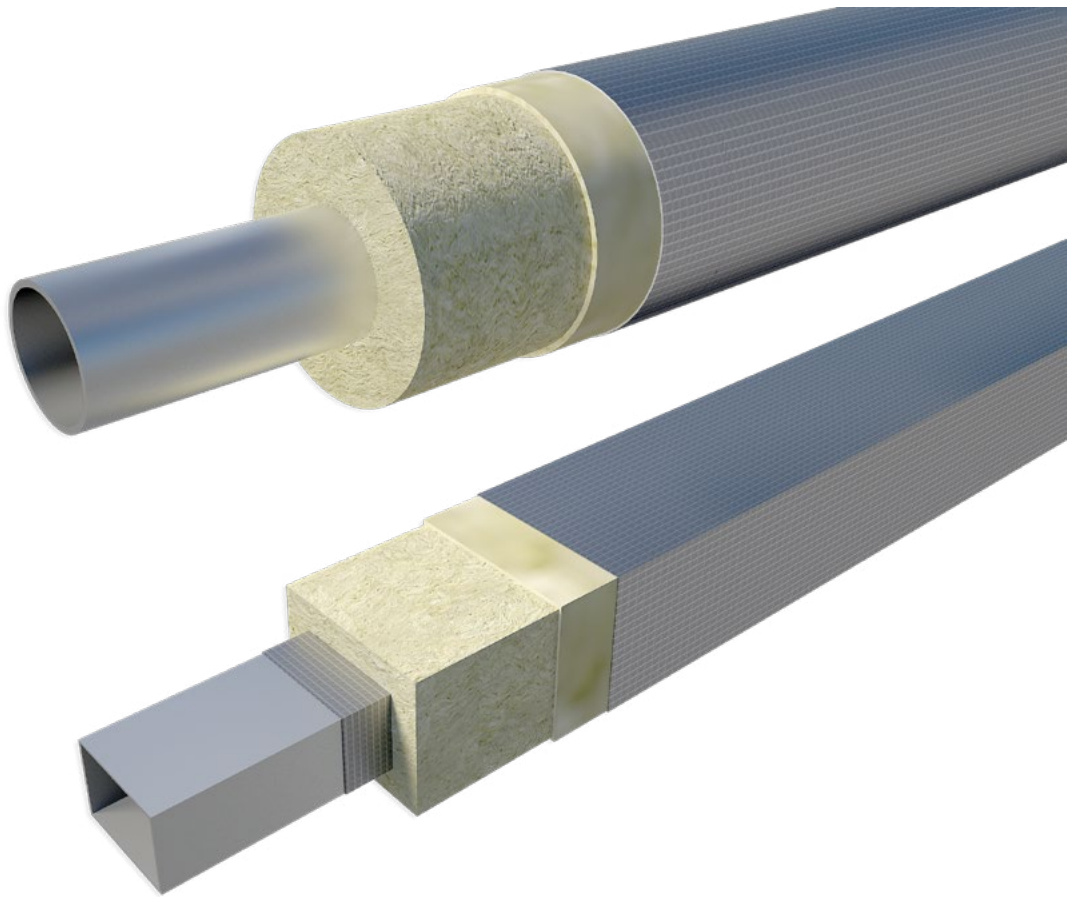
TechWrap

Acoustic solutions for HVAC services

TechWrap is constructed from strips (lamella) of ROCKWOOL bonded on edge to ROCKWOOL Acoustic Membrane to provide high resistance to compression: Reinforced aluminium foil (inner) / ROCKWOOL lamella acoustic insulation / ROCKWOOL Acoustic Membrane / Reinforced aluminium foil (outer).

- Thickness maintained at corners, bends and fixing locations to maintain acoustic performance
- Single application of materials
- Easy to handle and install
- Thermal insulation properties





APPLICATIONS

TechWrap is designed for easy installation around building services and HVAC equipment to reduce noise.

Typical applications include:

- Ventilation Ducts
- Pipework

PERFORMANCE

Service temperature and limiting service temperature

TechWrap can be used to provide thermal and acoustic insulation to HVAC services operating at temperatures in the range 0°C to 230°C. The outer facing temperatures should not exceed 80°C. At temperatures below ambient, the foil facing must be continued onto the pipe surface in order to maintain the vapour barrier.

Test programme and results

ROCKWOOL TechWrap has been independently tested at the Acoustical Investigation & Research Organisation (AIRO) laboratory.

Durability

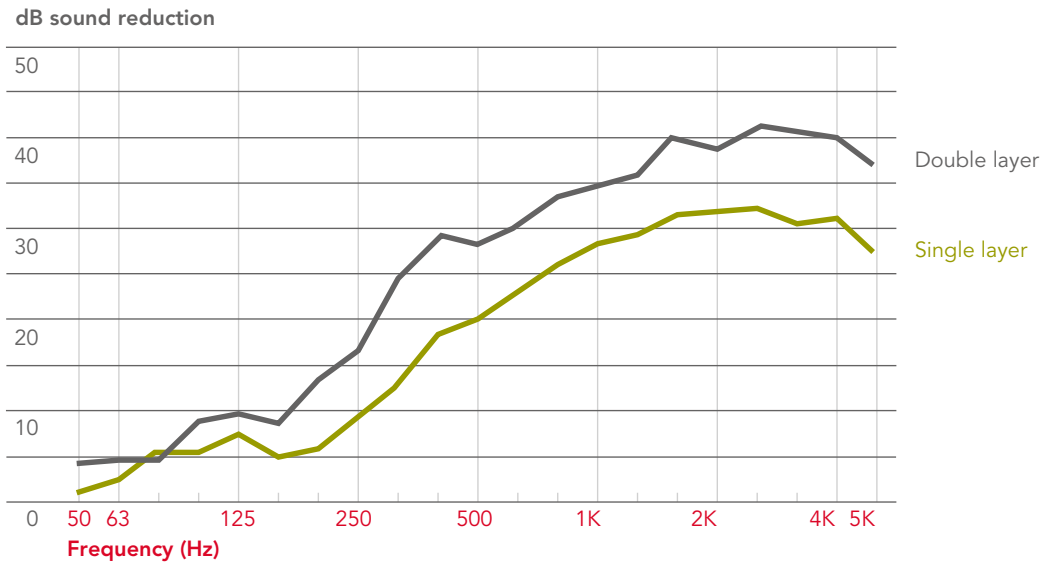
ROCKWOOL stone wool insulation products have been proven in service for over 60 years, in a wide range of climates and degrees of exposure. ROCKWOOL insulation will generally perform effectively for the lifetime of the building, plant or structure.

PRODUCT INFORMATION

Property	Dimension
Length	1200mm
Width	1000mm
ROCKWOOL Thickness	25mm, 50mm
Mass layer	5kg/m ²

TECHWRAP 25MM DB IMPROVEMENTS

dB improvements through 0.8mm steel duct for single and double layers of ROCKWOOL TechWrap.



The test programme conducted at AIRO was designed to indicate as closely as possible the true-to-life acoustic performance of TechWrap when applied to ductwork. TechWrap was installed in-situ on a 6 metre length of 60mm x 1000mm duct. As expected, sound leakage was noted at inaccessible duct bearer locations during the test. As with other likely on-site irregularities, this leakage may not have been adequately represented by a more simple flat panel test. To show the actual improvements provided by TechWrap, the noise reduction provided by the original 'untreated' duct is excluded from the above graph. The weighted sound reduction for a single layer of TechWrap is 30dB; double layer 36dB.

HANDLING

TechWrap is easily cut to shape with a sharp knife.

INSTALLATION

General

ROCKWOOL Acoustic Membrane should be positioned outermost from the sound source and overlapped at all joints.

TechWrap

TechWrap should be cut 25mm oversize and a 25mm strip of ROCKWOOL removed to create an overlap. All cutting operations can be completed using a sharp knife.

75mm wide plain aluminium foil self-adhesive tape should be used to seal the joints (Idenden type T303, or similar and approved).

Fixings

Welded steel pins should be used to fix TechWrap to the duct. However, subject to the manufacturer's approval, adhesive applied insulation hangers may be used in place of welded pins (check with manufacturer regarding self-adhesive pins). Particular attention should be paid to support of the TechWrap at joint locations and where sagging may occur, e.g. in 'soffit' areas. The number of pins required will depend upon size and orientation of the duct. However, where pins are employed at TechWrap edges, 4 no. are recommended at 1000mm edges and 5 no. at 1200mm edges. Additional 'lines' of pins should be at nominal 300mm spacings. Where a vapor barrier is required, support pins and hangers, which penetrate the foil, should be sealed using aluminium tape.

LEGAL NOTICES

General safety requirements – Building Safety Act 2022

ROCKWOOL Limited is committed to supporting specifiers, resellers and users of ROCKWOOL products for the full life cycle of the product to comply with the obligations and responsibilities set out in the Building Safety Act 2022. With regard to the general safety requirements of the Act, ROCKWOOL Limited cannot control or foresee every situation where its products might be used. We therefore strongly advise that specifiers, resellers and users contact us where use of ROCKWOOL products is contemplated in applications different from those explicitly described in the latest, relevant ROCKWOOL product datasheets; especially in applications that can be reasonably foreseen as critical to safety.

ROCKWOOL Limited reserves the right to amend the specification of its products without notice. Changes to the ROCKWOOL manufacturing process, or to pertinent regulations, may be reflected in changes to tested and certified product performance. Whilst ROCKWOOL Limited endeavours to keep its publications up to date, readers will appreciate that between publications there may be pertinent changes in the law or other developments affecting the accuracy of the information contained in our publications.

ROCKWOOL Limited does not accept responsibility for the consequences of using (including testing or certifying) its products in applications different from those explicitly described in the relevant ROCKWOOL product datasheets. Expert advice should be sought, and ROCKWOOL Limited should be contacted, where such different use is contemplated, or where the extent of any use described by ROCKWOOL Limited is in doubt.

The ROCKWOOL Trademark

ROCKWOOL® - our trademark

The ROCKWOOL trademark was initially registered in Denmark as a logo mark back in 1936. In 1937, it was accompanied with a word mark registration; a registration which is now extended to more than 60 countries around the world.

The ROCKWOOL trademark is one of the most important assets of the ROCKWOOL Group, and is therefore well-protected and defended by ROCKWOOL throughout the world.

If you require permission to use the ROCKWOOL logo for your business, advertising or promotion, you must apply for a Trade Mark Usage Agreement.

To apply, write to:
marketcom@rockwool.com

Trademarks

Registered trademarks of the ROCKWOOL Group include but are not limited to:

ROCKWOOL®, RockClose®, RainScreen Duo Slab®, HardRock®, RockFloor®, Flexi®, RockFall®, FirePro®, DuctRock®, BeamClad®, NyRock®

© ROCKWOOL 2025.
All rights reserved.

Photography and illustrations

The product illustrations are the property of ROCKWOOL Limited and have been created for indicative purposes only.

Unless indicated below, the photography and illustrations used in this guide are the property of ROCKWOOL Limited. We reserve all rights to the usage of these images.

If you require permission to use ROCKWOOL images, you must apply for a Usage Agreement.

To apply, write to:
marketcom@rockwool.com

HEALTH & SAFETY

A Material Safety Data Sheet is available and can be downloaded from www.rockwool.com/uk to assist in the preparation of risk assessments, as required by the Control of Substances Hazardous to Health Regulations (COSHH)

ROCKWOOL stone wool - safe to install and live alongside

There are no hazardous classifications associated with stone wool insulation manufactured by ROCKWOOL-UK according to EU REACH and UK REACH regulations on health and the environment.

ROCKWOOL safe use instruction sheets and material safety data sheets (where applicable) can be downloaded [here](#).



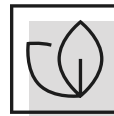
Sustainability

ROCKWOOL products are used to enrich modern living, creating safer, healthier and more climate-resilient communities.

We transform abundant, natural volcanic rock into stone wool insulation products that are used to reduce energy demand, lower fuel bills and help address society's climate change challenges.

ROCKWOOL stone wool insulation is recyclable and can be transformed into new ROCKWOOL products. Please contact us for details of how we can work together to recycle waste ROCKWOOL stone wool material that may be generated during on-site installation.

Our annual sustainability reports, which set out progress against our sustainability goals, and further details of the positive impacts of using our products can be found on our website.



Environment

ROCKWOOL takes a fact-based, auditable approach to documenting our progress in maximising our products' positive impact and minimising the effect our operations have on the environment, backed by third-party references and methodologies. Further details can be found online in our annual sustainability report.

Our high-tech production process uses filters, pre-heaters, after-burners and other cleaning and collection systems that help to reduce the effects of our manufacturing operations on the environment.

ROCKWOOL stone wool insulation does not contain (and has never contained) gases that have ozone depletion potential (ODP) or global warming potential (GWP).

