

Fire Barrier Slab

Tools required

- Sharp insulation knife or insulation saw
- Tape measure

Ancillary products

Acoustic Intumescent Sealant

Fixing and application

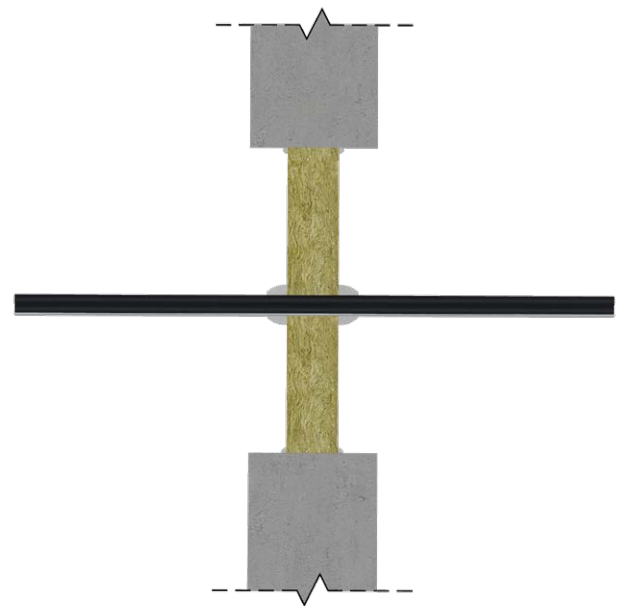
1. Fire Barrier Slab should be cut to the appropriate height and friction fitted within the opening.
2. ROCKWOOL Fire Barrier Slab can be penetrated by steel pipes of ≤ 33 mm external diameters and steel cable trays of ≤ 305 mm x 50mm.
3. Fire Barrier Slab should be cut to fit tightly around penetration services.
4. Any large gaps present around services should be infilled with offcuts of the Fire Barrier Slab.
5. Seal around services using Acoustic Intumescent Sealant.
6. ROCKWOOL Acoustic Intumescent Sealant or ROCKWOOL LUL Intumescent Sealant should then be applied to both the butt joints and perimeter of the barrier seal.
7. Penetrating services must be independently supported by a maximum of 150mm from the face of the slabs.

Handling

ROCKWOOL Fire Barrier Slab is easy to handle. It is easy to cut to any shape. The product should be stored indoors or under a weatherproof covering.

Maintenance

Once installed ROCKWOOL Fire Barrier Slab should need no maintenance. Fire Barrier Slab should be inspected to ensure that they have not been disturbed during maintenance of areas and/or as part of a regular maintenance program.



Health & safety

The mechanical effect of fibres in contact with skin may cause temporary itching.



Cover exposed skin
When working in unventilated area wear disposable face mask.



Clean area using vacuum equipment.



Waste should be disposed of according to local regulations.



Rinse in cold water before washing.



Ventilate working area if possible.



Wear goggles when working overhead.